

## Registration

**Scott Rivierer**

**Please mail registration and payment to:**

SafePath Children's Advocacy Center, Inc.  
736 Whitlock Avenue, Suite 600  
Marietta, GA 30064

\_\_\_\_\_  
Name

\_\_\_\_\_  
Organization

\_\_\_\_\_  
Address

\_\_\_\_\_  
City/State/Zip

\_\_\_\_\_  
Phone

\_\_\_\_\_  
Email

**Registration**

Registration Fee: \$100.00 \_\_\_\_\_

CEU's: \$20.00 \_\_\_\_\_

Total: \_\_\_\_\_

**CEU's (Please Circle)**

*Social Workers (NASW)      Counselors (LPCA)*

*Play Therapists (RPT)*

**[Register Online](#)**

**[Click Here](#)**

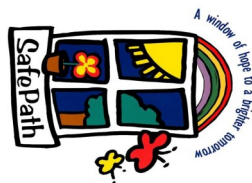
or

***Make Check Payable to SafePath***

**Registration Deadline: September 11, 2017**

**NO REFUNDS or SUBSTITUTIONS**

*Training Opportunity*



Safepath Children's Advocacy Center, Inc.  
736 Whitlock Avenue, Suite 600  
Marietta, GA 30064



SafePath Children's Advocacy Center  
*In Partnership with*  
*WellStar Health Systems*



*Presents*

**Scott Riviere**  
**MS, LPC, RPT-S**



***Bag-O-Tricks:***  
***Creative Play Therapy***  
***Interventions for Children***

**September 15, 2017**



## Scott Riviere



**Scott Riviere** is a Licensed Professional Counselor and one of the first Registered Play Therapist-Supervisors in Louisiana. He is the Director of K.I.D.Z., Inc., Louisiana's first Play Therapy Institute, where his practice is limited exclusively to children and adolescents and their families. Scott has over 25 years experience with children and their families dealing with such issues as grief and trauma, anxiety disorders, ADHD, behavioral problems, attachment disorders, and Autism Spectrum disorders. He is currently serving on the Board for the Association for Play Therapy and has been recognized by the Association of Play Therapy for his contribution to the field. He is a published author, international speaker and frequent guest on various media outlets.

## About The Training

This interactive workshop will focus on advanced and empirically-influenced interventions for children. Workshop participants will learn the primary method for engaging kids in treatment and well as the benefits of using play therapy based interventions with children. A variety of creative play therapy interventions will be presented and participants will have the opportunity to interact with the activities to gain mastery and understanding. Topics covered include: anger management, social skills training, grief/trauma resolution, anxiety reduction, and positive behavior management.

## Agenda

Friday, September 15, 2017

8:30-9:00	Registration
9:00-10:30	Speaker
10:30-10:45	Break
10:45-12:00	Speaker
12:00-1:00	Lunch on Your Own
1:00-2:30	Speaker
2:30-2:45	Break
2:45-4:30	Speaker

## Learning Objectives

The play therapist attendees will be able to:

- Identify key developmental differences between children and adolescents;
- Identify the primary therapeutic factor in counseling kids;
- List three benefits of directive and non-directive play therapy interventions;
- Explain the difference between self-esteem and self-concept;
- Role play creative play therapy interventions to manage and express aggressive behaviors.

## Continuing Education

### Professional Counselors

6 CE core hours approved by the Licensed Professional Counselors Association of Georgia, LPCA. Approval #XXXX-XX.

### Social Workers

6 Related Continuing Education Hours have been approved by NASW-GA.

### Play Therapists

6 Contact Play Therapy Credit Hours Approved through the Association for Play Therapy. APT Approved Provider XX-XXX.

## Location

WellStar East Cobb Health Park  
Community Room  
3747 Roswell Road NE, Suite 115  
Marietta, GA 30062

### Directions

**If you are coming from north of Marietta**

\*Take **I-75 SOUTH**

\*Take Exit 265 / North Marietta Parkway / GA -120A loop

\*Turn Left onto **North Marietta Parkway**

\*Take Roswell Rd / GA 120 exit

\*Turn Left onto **Roswell Rd**

\*Go approx.. 3.5 miles

\*Turn Left into **WellStar East Cobb Health Park**

**If you are coming from south of Marietta**

\*Take **I-75 NORTH**

\*Take Exit 263 / South Marietta Parkway / GA -120A loop

\*Turn Right onto **South Marietta Parkway**

\*Take Roswell Rd / GA 120 exit

\*Turn Right onto **Roswell Rd**

\*Go approx.. 3.5 miles

\*Turn Left into **WellStar East Cobb Health Park**

**[Register Now!](#)**